

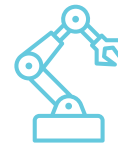
100% COMPLIANT WORKFORCES RESULT IN LOWER RISK



RESULTS

CLIENTS

A large manufacturing company reached out to Staff Management | SMX because over half of their workforce was non-compliant. On average, fines for non-compliant workers can range from \$110-\$1100 per day, which means they were facing up to \$128,000 in fines every day they remained non-compliant. Over the next year, Staff Management | SMX worked with the client to transfer their workforce to 100 percent compliant and eliminated their chance of facing a high compliance loss.



100%
COMPLIANCE ACHIEVED

\$128,000
SAVED PER DAY FROM
COMPLIANCE FINES

A large food manufacturing company was facing potential compliance fines and contacted Staff Management | SMX to fix their work site. Over 75% of their workers were non-compliant and they were facing over \$141,000 per day in potential compliance fines. Within a few weeks of being on site, we staffed a fully compliant workforce and saved them hundreds of thousands in potential fines.



100%
COMPLIANCE ACHIEVED

\$141,000
SAVED PER DAY FROM
COMPLIANCE FINES

A private company was struggling to find a staffing agency that would provide compliant workers for their site. They contacted Staff Management | SMX to staff their operation with a compliant workforce. More than 150 people in their workforce were non-compliant when we started. After working with Staff Management, 100 percent of their workforce was compliant and \$165,000 was saved in potential compliance fines.



100%
COMPLIANCE ACHIEVED

\$165,000
SAVED PER DAY FROM
COMPLIANCE FINES