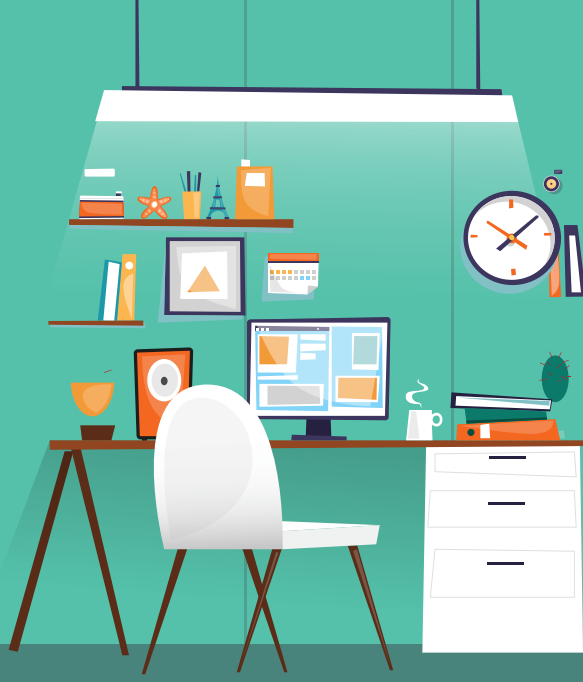


Dec 2016

# EMPLOYMENT TRENDS REPORT

November JOB GAINS



178K  
TOTAL JOBS  
ADDED

## Total NONFARM PAYROLL EMPLOYMENT GAINS

SEPT

208K

NUMBERS HAVE BEEN REVISED

OCT

142K

NUMBERS HAVE BEEN REVISED

NOV

178K

## Average MONTHLY GAINS



176K/MONTH OVER  
THE PAST 3 MONTHS

196,300K/MONTH OVER  
THE PAST 12 MONTHS

## Total NONFARM PAYROLL JOB GAINS

PROFESSIONAL AND BUSINESS SERVICES

63K

HEALTH CARE

28K

CONSTRUCTION

19K

PROFESSIONAL AND BUSINESS SERVICES  
SAW THE LARGEST GAINS

## Average WORK WEEK



34.4

NONFARM PAYROLL  
HOURS



3.3

FACTORY OVERTIME  
HOURS



40.6

MANUFACTURING  
HOURS

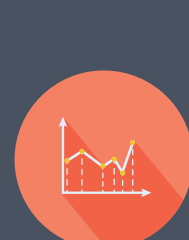


33.6

PRODUCTION &  
NONSUPERVISORY  
HOURS

## Average HOURLY PAY

## Unemployment RATE



\$25.89

NONFARM PAYROLL



2.5%

AVG. HOURLY  
EARNINGS INCREASED  
2.5% OVER THE YEAR



\$21.73

PRIVATE-SECTOR  
PRODUCTION &  
NONSUPERVISORY



UNEMPLOYMENT  
RATE DECREASED TO

4.6%

## American STAFFING ASSOCIATION

“

While the pace of overall hiring has slowed from peak levels in 2013, there's some holiday cheer in this month's jobs report for job seekers. Given that payroll budgets are being reset for January, December is one of the best times for job seekers to pursue new flexible and permanent employment opportunities.

”

RICHARD WAHLQUIST

PRESIDENT AND CHIEF EXECUTIVE OFFICER OF  
THE AMERICAN STAFFING ASSOCIATION

## U.S. STAFFING INDUSTRY

0.5%

SEASONALLY ADJUSTED

STAFFING EMPLOYMENT UP  
.5% FROM OCTOBER AND UP  
1.9% FROM NOVEMBER 2015

1.9%

SEASONALLY ADJUSTED

YEAR-TO-YEAR STAFFING  
JOB GROWTH AVERAGED  
1.9% PER MONTH OVER  
THE PAST 12 MONTHS

## Sources

1 [HTTP://WWW.BLS.GOV/NEWS.RELEASE/EMPSIT.NR0.HTM](http://www.bls.gov/news.release/empsit.nr0.htm)

2 [HTTPS://AMERICANSTAFFING.NET/POSTS/2016/12/02/BLS-STAFFING-EMPLOYMENT-EDGES-NOVEMBER/](https://americanstaffing.net/posts/2016/12/02/bls-staffing-employment-edges-november/)

staff management | smx

a TRUEBLUE company