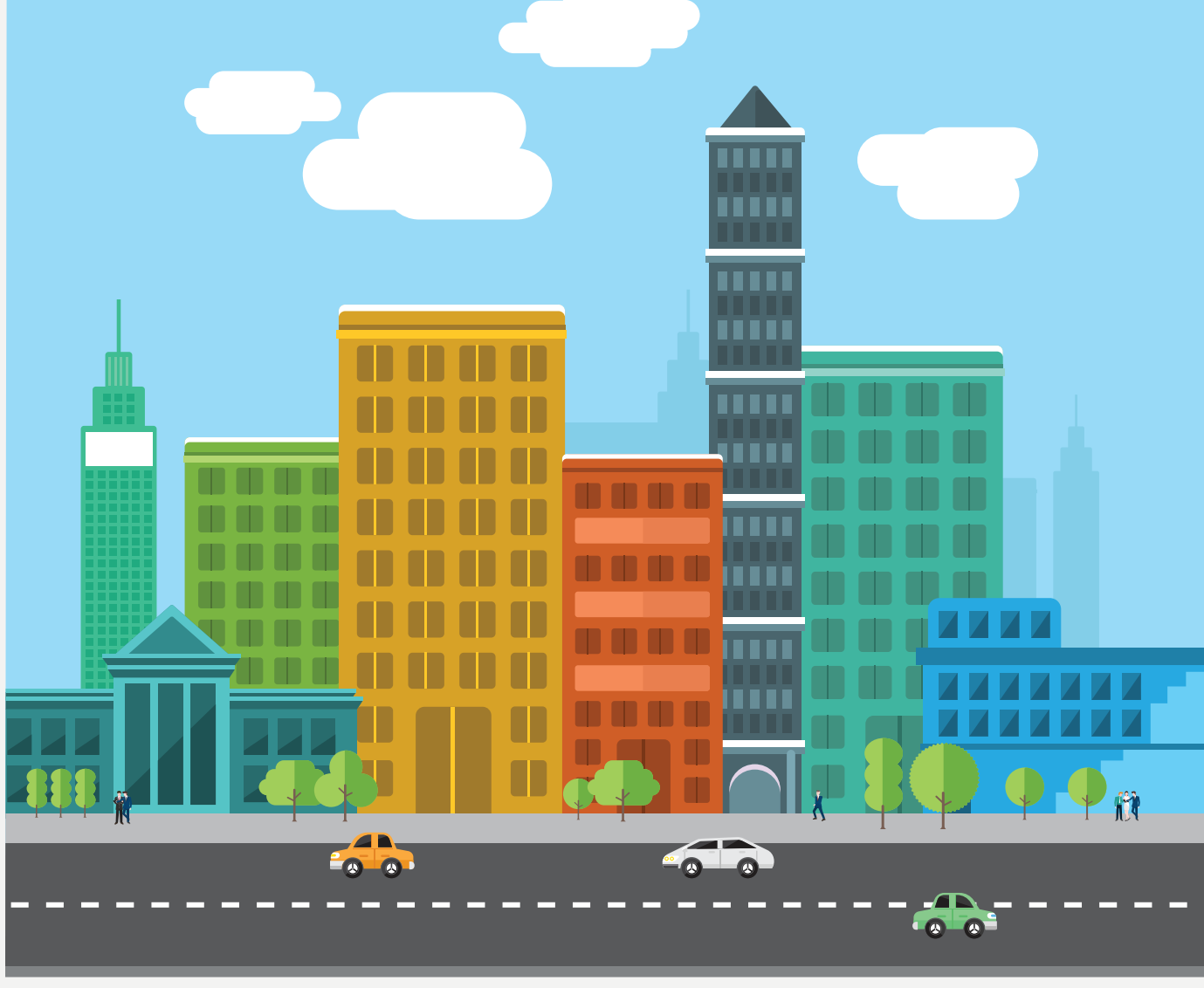


JULY 2016

EMPLOYMENT TRENDS REPORT



TOTAL NONFARM PAYROLL

**JOBS ADDED
IN JUNE 287K**



TOTAL NONFARM PAYROLL JOB GAINS



**APRIL
144K***

NUMBERS HAVE BEEN REVISED

**MAY
11K***

NUMBERS HAVE BEEN REVISED

**JUNE
287K**

AVERAGE MONTHLY GAINS



**147K/MONTH OVER
THE PAST 3 MONTHS**

**199K/MONTH OVER
THE PAST 12 MONTHS**

TOTAL NONFARM PAYROLL JOB GAINS

16K

FINANCIAL
ACTIVITIES

22K

FOOD SERVICES &
DRINKING PLACES

39K

HEALTH CARE

59K

LEISURE AND
HOSPITALITY

**LEISURE AND HOSPITALITY
SAW THE LARGEST GAINS**

AVERAGE WORK WEEK



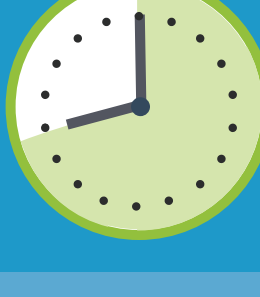
34.4

NONFARM PAYROLL
HOURS



3.3

FACTORY OVERTIME
HOURS



40.7

MANUFACTURING
HOURS



33.6

PRODUCTION &
NON-SUPERVISORY
HOURS

AVERAGE HOURLY PAY



\$25.61
NONFARM
PAYROLL

AVG. HOURLY EARNINGS
INCREASED 2.6%
OVER THE YEAR

\$21.51 PRIVATE-SECTOR PRODUCTION
& NONSUPERVISORY

UNEMPLOYMENT RATE



UNEMPLOYMENT
RATE ROSE TO

4.9%

AMERICAN STAFFING ASSOCIATION



“ Even though growth in labor demand has slowed from a year ago, businesses continue to increase the size of their permanent and flexible workforces. This is good news for all job seekers and especially for new college graduates who should consult with area staffing and recruiting firms about short-term and long-term employment opportunities as they begin to build their career portfolios. ”

RICHARD WAHLQUIST
PRESIDENT AND CHIEF EXECUTIVE OFFICER OF
THE AMERICAN STAFFING ASSOCIATION

U.S. STAFFING INDUSTRY



0.6%

SEASONALLY ADJUSTED

STAFFING EMPLOYMENT DOWN
.5% FROM MAY & UP
.6% FROM JUNE 2015

1.5%

SEASONALLY ADJUSTED

YEAR-TO-YEAR STAFFING
JOB GROWTH AVERAGED
1.5% PER MONTH OVER
THE PAST 12 MONTHS

Sources

1 [HTTP://WWW.BLS.GOV/NEWS.RELEASE/EMPSIT.NR0.HTM](http://www.bls.gov/news.release/empsit.nr0.htm)

2 [HTTPS://AMERICANSTAFFING.NET/POSTS/2016/07/08/BLS-STAFFING-EMPLOYMENT-RISES-IN-JUNE/](https://americanstaffing.net/posts/2016/07/08/bls-staffing-employment-rises-in-june/)

staff management | smx

a TRUEBLUE company