

MARCH 2016

EMPLOYMENT TRENDS REPORT



FEBRUARY JOB GAINS

**JOBS ADDED
IN FEBRUARY**
242K



TOTAL NONFARM PAYROLL EMPLOYMENT GAINS



DECEMBER
271K*

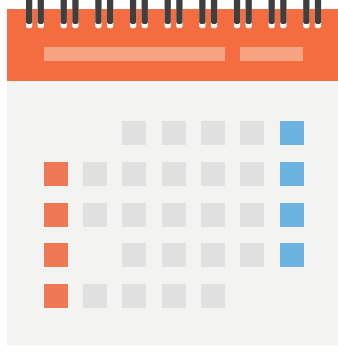
NUMBERS HAVE BEEN REVISED

JANUARY
172K*

NUMBERS HAVE BEEN REVISED

FEBRUARY
242K

AVERAGE MONTHLY GAINS



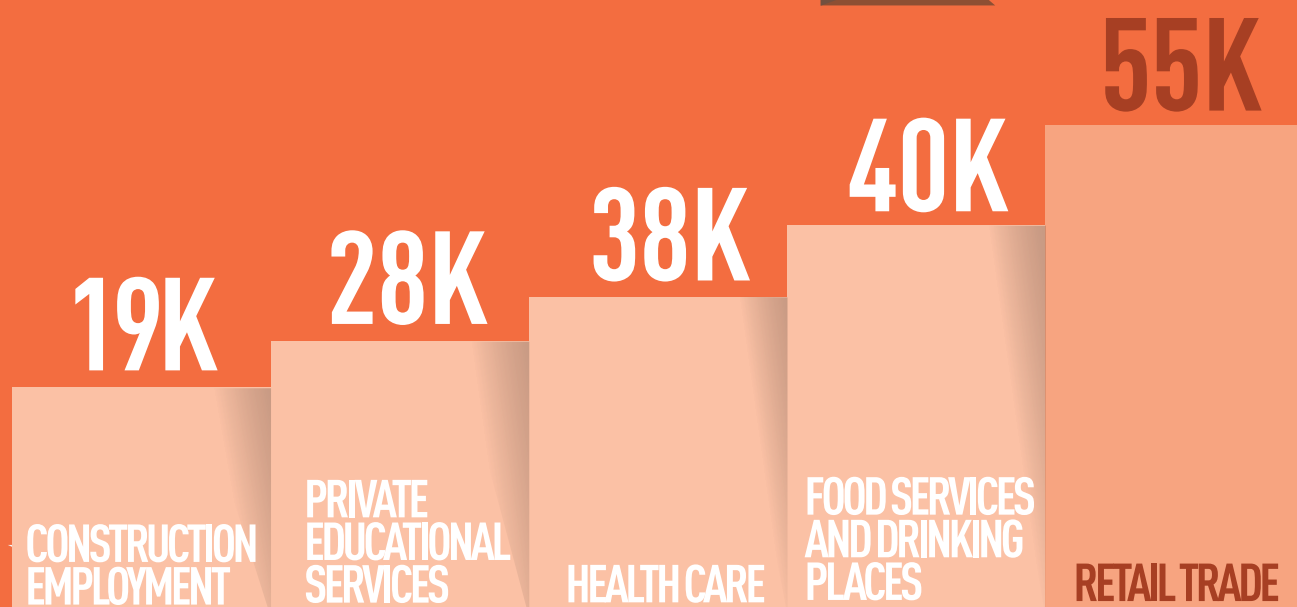
228K/MONTH

Over the past 3 months

235K/MONTH

Over the past 12 months

TOTAL NONFARM PAYROLL JOB GAINS



**THE RETAIL TRADE SECTOR
SAW THE LARGEST GAINS**

AVERAGE WORK WEEK



34.4

NONFARM PAYROLL
HOURS



3.3

FACTORY OVERTIME
HOURS



40.8

MANUFACTURING
HOURS



33.7

PRODUCTION &
NONSUPERVISORY
HOURS

AVERAGE HOURLY PAY



\$25.35
NONFARM
PAYROLL

AVG. HOURLY EARNINGS
INCREASED 2.2%
OVER THE YEAR

\$21.32

PRIVATE-SECTOR PRODUCTION
& NONSUPERVISORY

UNEMPLOYMENT RATE

UNEMPLOYMENT RATE
IS UNCHANGED

4.9%



AMERICAN STAFFING ASSOCIATION



“ Even in the face of significant global economic headwinds, businesses across many sectors continue to strategically add to their workforces. This is a positive indicator of employer confidence in continued U.S. economic growth. ”

RICHARD WAHLQUIST
PRESIDENT AND CEO,
AMERICAN STAFFING
ASSOCIATION

U.S. STAFFING INDUSTRY

3.0%

SEASONALLY ADJUSTED

STAFFING EMPLOYMENT DOWN
0.3% FROM JANUARY 2015
& UP 3% FROM FEBRUARY 2014

3.8%

SEASONALLY ADJUSTED

YEAR-TO-YEAR STAFFING
JOB GROWTH AVERAGED
3.8% PER MONTH OVER
THE PAST 12 MONTHS

Sources

1 [HTTP://WWW.BLS.GOV/NEWS.RELEASE/EMPSIT.NRO.HTML](http://www.bls.gov/news.release/empsit.nro.html)

2 [HTTPS://AMERICANSTAFFING.NET/POSTS/2015/12/04/BLS-STAFFING-EMPLOYMENT-UP-IN-FEBRUARY/](https://americanstaffing.net/posts/2015/12/04/bls-staffing-employment-up-in-february/)

staff management | smx

a TRUEBLUE company