

FEBRUARY 2016

EMPLOYMENT TRENDS REPORT

TEMPORARY JOB GAINS ¹



TEMP HELP SERVICES UP 2.9% FROM JANUARY 2015

DESPITE 25K DECREASE FROM DECEMBER

TOTAL NONFARM PAYROLL ¹

JOBS ADDED IN JANUARY 151K



TOTAL NONFARM PAYROLL JOB GAINS ¹



NOVEMBER

280K *

NUMBERS HAVE BEEN REVISED

DECEMBER

262K *

NUMBERS HAVE BEEN REVISED

JANUARY

151K

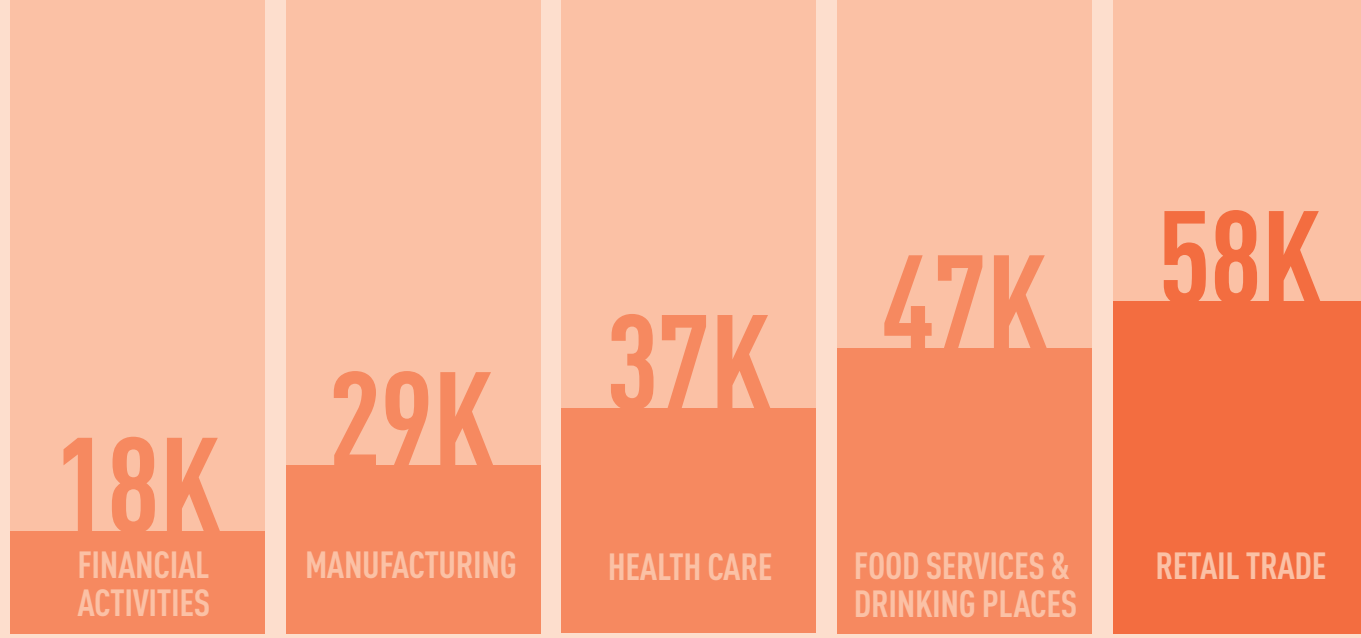
AVERAGE MONTHLY GAINS ¹



231K/MONTH OVER
THE PAST 3 MONTHS

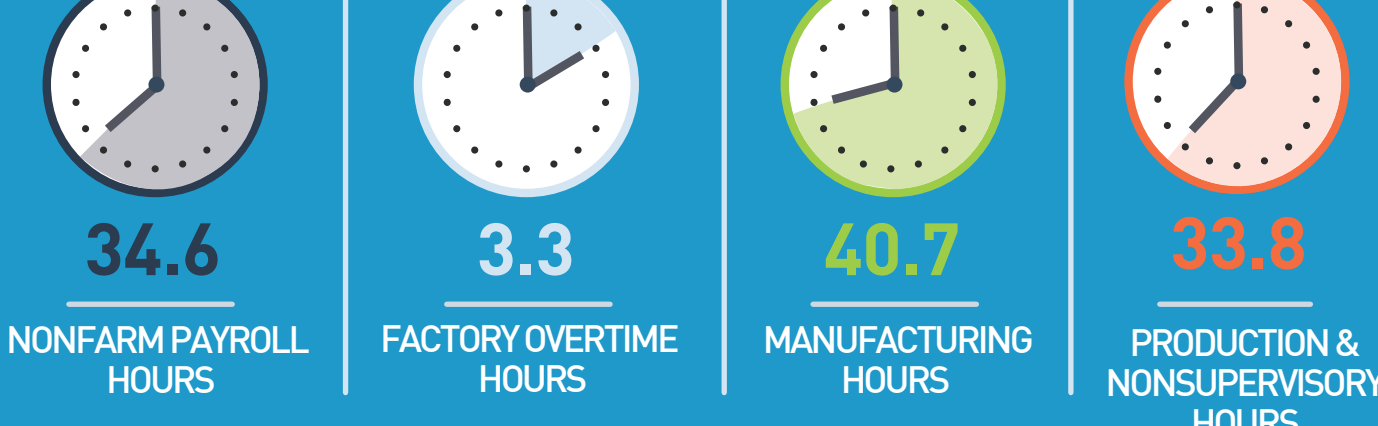
228K/MONTH OVER
THE PAST 12 MONTHS

TOTAL NONFARM PAYROLL JOB GAINS ¹



THE RETAIL TRADE SECTOR SAW THE LARGEST GAINS

TOTAL NONFARM PAYROLL JOB GAINS ¹



AVERAGE HOURLY PAY ¹



\$25.39
NONFARM
PAYROLL

AVG. HOURLY EARNINGS
INCREASED 2.5%
FROM JAN 2015

\$21.33

PRIVATE-SECTOR PRODUCTION
& NONSUPERVISORY

UNEMPLOYMENT RATE ¹



UNEMPLOYMENT RATE
WENT DOWN TO

4.9%

AMERICAN STAFFING ASSOCIATION ²



“Mirroring the economy at large, staffing firms are reporting mixed demand across major industry sectors. However, services sectors growth continues—particularly in occupations that require higher skills and education.”

RICHARD WAHLQUIST
PRESIDENT AND CEO,
AMERICAN STAFFING
ASSOCIATION

U.S. STAFFING INDUSTRY ²

3.2%

SEASONALLY ADJUSTED

STAFFING EMPLOYMENT DOWN
0.9% FROM DECEMBER 2015
& UP 3.2% FROM JANUARY 2014

4.0%

SEASONALLY ADJUSTED

YEAR-TO-YEAR STAFFING
JOB GROWTH AVERAGED
4.0% IN 2015

Sources

1 [HTTP://WWW.BLS.GOV/NEWS.RELEASE/EMPSIT.NRO.HTM](http://www.bls.gov/news.release/empsit.nro.htm)

2 [HTTPS://AMERICANSTAFFING.NET/POSTS/2015/12/04/BLS-STAFFING-EMPLOYMENT-UP-IN-JANUARY/](https://americanstaffing.net/posts/2015/12/04/bls-staffing-employment-up-in-january/)

staff management

smx

a TRUEBLUE company